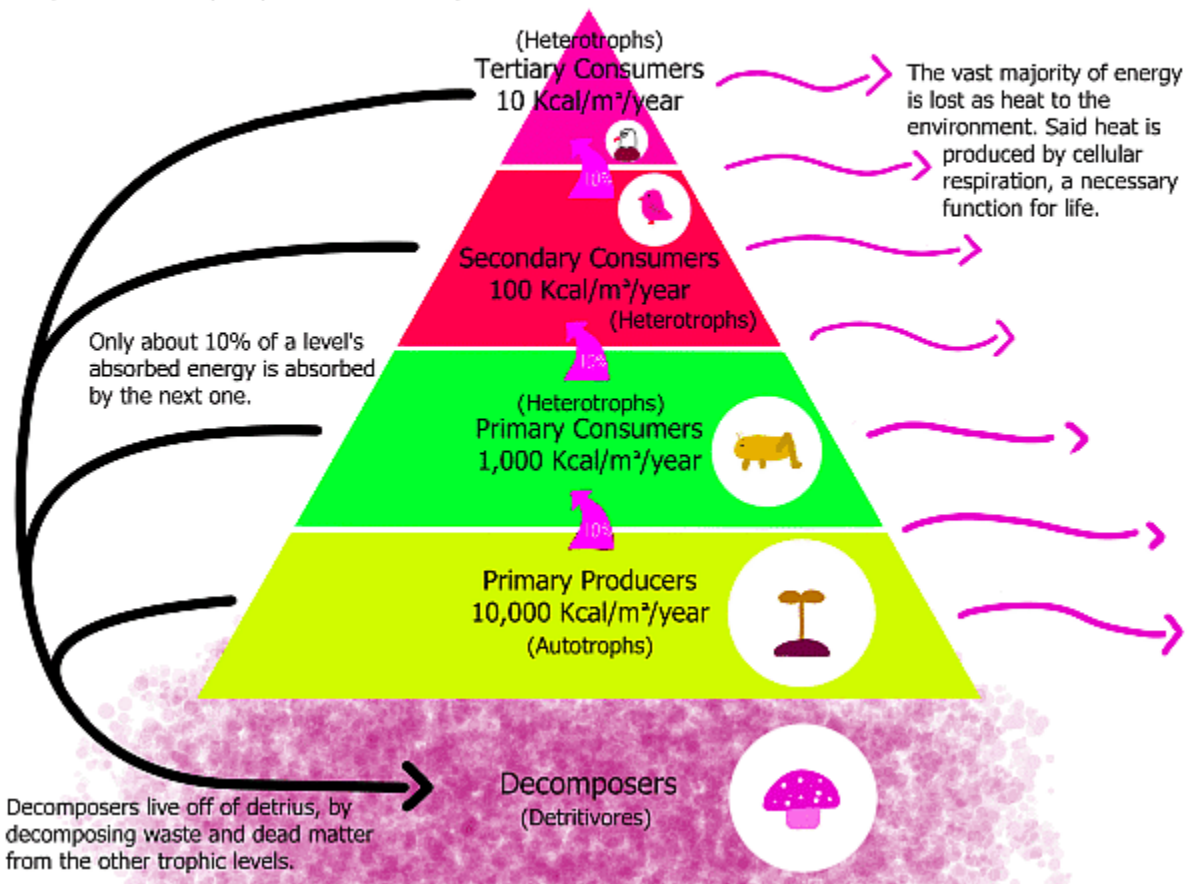


# Ecosystem

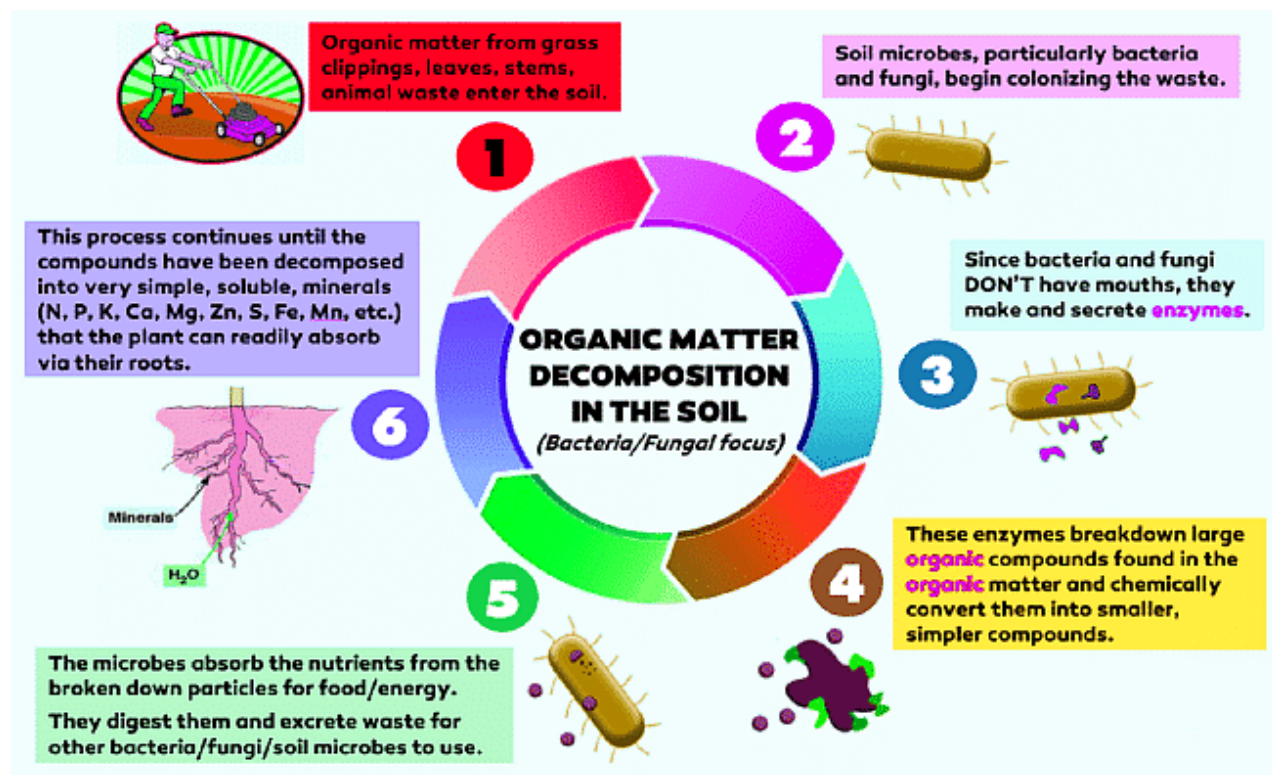
## Trophic Level & Energy Transfer

### Trophic Levels & Energy Transfer

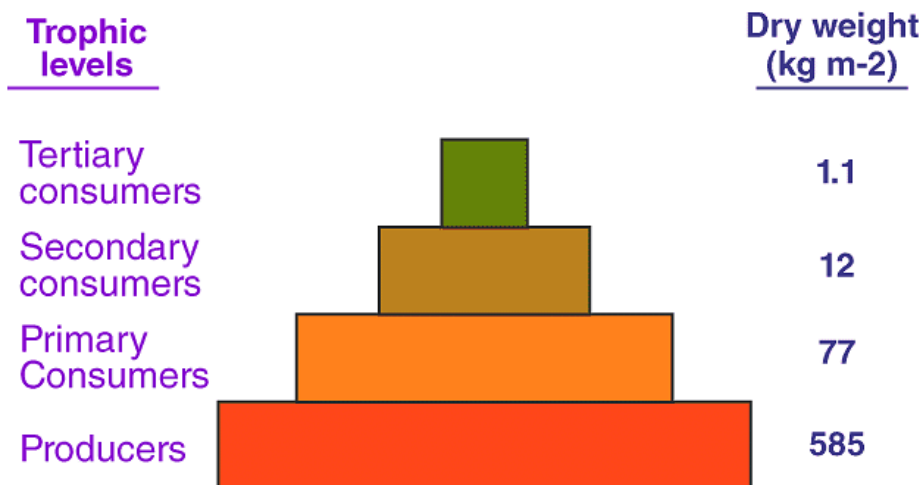
Trophic levels are split by a who-eats-who system.



## Decomposition cycle in a terrestrial ecosystem

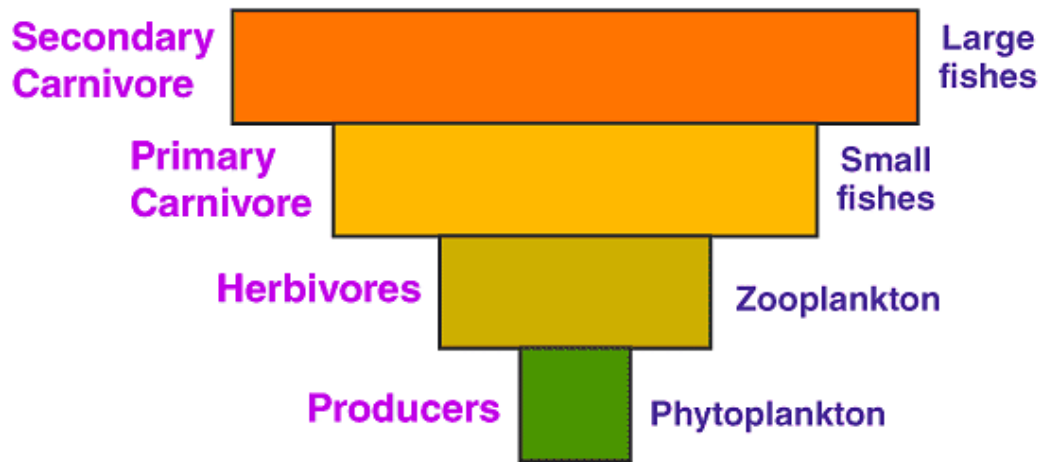


## Biomass Pyramid of a Grassland Ecosystem



Pyramid of biomass for grassland ecosystem

## Biomass Pyramid of a Marine Ecosystem



Inverted pyramid of biomass for marine ecosystem